

"I have had a life changing experience working with Hameed Ali and the Diamond Approach for the past 26 years. The Diamond Approach is among the most integrated and visionary teachings of body, heart and spirit that I know."

— Jack Kornfield

Diamond Approach® Los Angeles

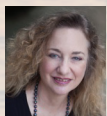
The Enneagram & the Soul

An ongoing group has formed in Santa Monica and remains open to new members.

Beginning with the November 2-3, 2013, weekend of DALA and continuing for the next year, Sandra Maitri will be teaching the foundational enneagram material. In this exploration, she will describe how the nine ego or personality types arise from early disconnection with the ground of Being, resulting in characteristic patterns of belief, emotion, and behavior. The enneagram will be taught in conjunction with the Diamond Approach's orientation to the soul, our personal consciousness, which gets shaped into our ennea-type. Her friend and colleague Joyce Lyke will be joining her as co-leader of the group, and will take the primary lead in teaching the soul material. This will be a rare opportunity to study the enneagram with Sandra and to work with the Diamond Approach, the transformational spiritual path that helps us move beyond the limitations our ennea-type into the fullness of our deepest nature.

The Diamond Approach, developed by A.H. Almaas, is a contemporary path of spiritual realization. Its teaching responds to the innate human longing for freedom through a variety of skillful methods, both ancient and modern. Authentic spiritual insight together with contemporary psychological understanding enables us to address the obstacles to realization particular to our time, place, culture, and personality. The practices of sensing into our direct experience and inquiring into it result over time in profound personal transformation, offering each of us the possibility of living our transcendent Beingness in the uniqueness of our personal life.

Teachers for Diamond Approach Los Angeles:



Sandra Maitri is one of the principal teachers of the Diamond Approach, and a member of its leadership council. She leads groups in the San Francisco Bay Area and in the United Kingdom. She was one of the original students of Claudio Naranjo, MD, a trailblazer in Transpersonal Psychology, and her background includes extensive work with Vipassana meditation and Tibetan Buddhism.

Her books, *The Spiritual Dimension of the Enneagram: Nine Faces of the Soul* and *The Enneagram of Passions and Virtues: Finding the Way Home*, were published by Tarcher/Penguin in 2000 and 2005.



Joyce Lyke is one of the senior and supervising teachers of the Diamond Approach and a member of its leadership council. She has been teaching Diamond Approach groups for 20 years, and currently leads on-going groups in Santa Barbara, Vancouver, Seattle, and the United Kingdom. In addition to her thirty years as a student in the Ridhwan School, home of the Diamond Approach, she was for fifteen years a teacher and workshop leader on Esalen's gestalt training staff. She has a degree in Somatic Psychology from Antioch University and has extensive bodywork and movement training.

Our weekend programs include evocative lectures, sitting and moving meditation practices, experiential exercises inquiry, and process groups.

Dates for weekend teachings:

- August 3-4, 2013
- November 2-3, 2013
- February 15-16, 2014
- April 26-27, 2014
- June 7-8, 2014
- September 13-14, 2014
- November 1-2, 2014

Cost per weekend: \$275

Fee reduction available for students.

For more information, please contact Carli Simons at carlisimons@yahoo.com or by phone at (818) 353-0353.

www.diamondapproachlosangeles.com